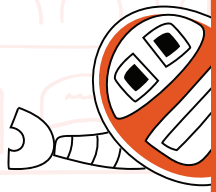


# **MacBick Labs + Interiors**

**Specialized Lab Design for  
Wastewater Treatment Facilities**



# Introduction

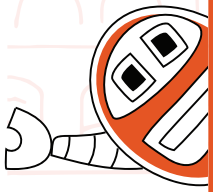
## About MacBick Labs + Interiors

MacBick Labs + Interiors is a WOSB-certified lab design firm with deep experience creating integrated, high-performance lab environments. We specialize in designing spaces that enhance efficiency, safety, and compliance—especially in regulated environments like wastewater treatment facilities.

## Purpose

This packet is intended to showcase our capabilities in wastewater facility lab design, outline our modular and repeatable project approach, and provide decision-makers—such as public works engineers, facility managers, and operations leads—with a clear roadmap for engaging with our team.





# Our Approach

## Design Philosophy: Durability, Safety, Efficiency



Use of corrosion-resistant and chemical-safe materials



Ergonomic layouts for technician workflow and safety



Long-lasting installations designed for low maintenance

## Sustainability and Regulatory Compliance



Designs aligned with EPA, OSHA, and local environmental codes



Integration of energy-efficient lighting, HVAC, and fume systems



Green building materials and waste minimization strategies

## Integration with Facility Operations



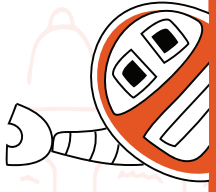
Strategic lab placement for easy access to process sampling



Alignment with SCADA and process monitoring systems



Designed to support day-to-day treatment workflows



# Core Capabilities

## Lab Layout and Design

- ✓ Wet labs, control labs, microbiological and analytical labs
- ✓ Workflow-based design with dedicated zones for sample intake, testing, and storage
- ✓ ADA compliance, ventilation zones, noise control, and lighting design

## Equipment Specification and Sourcing

- ✓ Sourcing of high-quality instruments, including Hach spectrophotometers, Fisher Scientific incubators, and Thermo Scientific pH meters
- ✓ Custom cabinetry, acid-resistant countertops, and integrated sink systems
- ✓ Optional tech add-ons, including VR-based spatial planning via AirLab VR

## Utilities and Infrastructure Integration

- ✓ Plumbing for corrosive waste and specialized drainage
- ✓ Fume extraction, HVAC balancing, and air quality control
- ✓ Backup systems and alarm integration for critical operations

## Turnkey Project Management

- ✓ Site consultations and needs assessments
- ✓ Coordination with MEP engineers and architects
- ✓ Procurement, installation, and commissioning
- ✓ Staff training and post-installation support





# What to Expect Your Project Journey

## Tailored Planning from Day One

Every project starts with a discovery session to understand your goals, testing volumes, and compliance needs. We develop a clear roadmap that ensures lab functionality, future growth potential, and regulatory success.

## Efficient Design-Build Process



### Concept & Assessment (1–2 weeks)

On-site walkthrough, lab workflow analysis, and initial schematic layout.



### Design & Procurement (3–4 weeks)

Finalized lab design, selection of materials and instrumentation, and construction drawings.



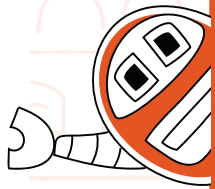
### Installation & Commissioning (2–3 weeks)

On-site buildout with integrated utilities and systems testing.



### Training & Handover (1 week)

Technician walkthroughs, equipment tutorials, and maintenance documentation.



# Case Study Snapshot

---

## Location

Sample Wastewater Treatment Facility, Colorado

---

## Challenge

Outdated lab with inefficient sampling workflow

---

## Solution

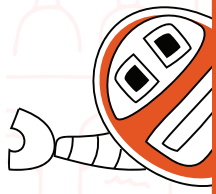
Installed modular wet lab with integrated SCADA-compatible data monitoring stations

---

## Result

Increased sample throughput by 40%, reduced technician error by 25%, and improved regulatory audit readiness





# Certifications & Partnerships



## Women-Owned Small Business (WOSB)

Certified for eligibility in federal and municipal public works contracting.

## Additional Certifications

- OSHA-compliant safety training for installation crews
- LEED-aware material sourcing for sustainable builds

## Technology & Equipment Partners

- AirLab VR for immersive space planning and training simulations
- Hach, Thermo Fisher, and VWR for lab instrumentation
- Case Systems for casework and cabinetry solutions





# Contact & Next Steps

## Schedule a Free 30-Minute Consultation

Let's explore your lab's goals, constraints, and vision. Get a tailored project preview and see how our repeatable framework can streamline your next lab build.

**Ready to Get Started?**

## Contact

**Bevin Carter**

*President, MacBick Labs and Interiors*



**[sales@macbick.com](mailto:sales@macbick.com)**



**[www.macbick.com](http://www.macbick.com)**

