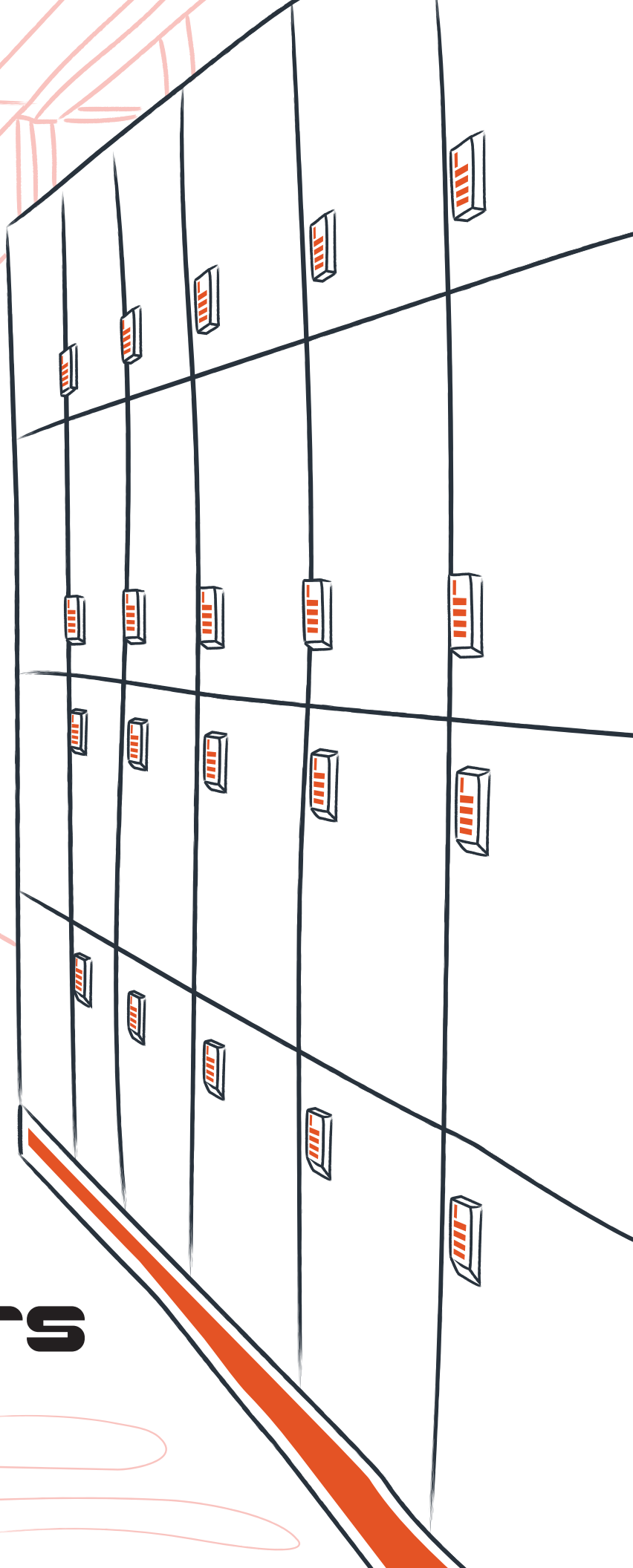


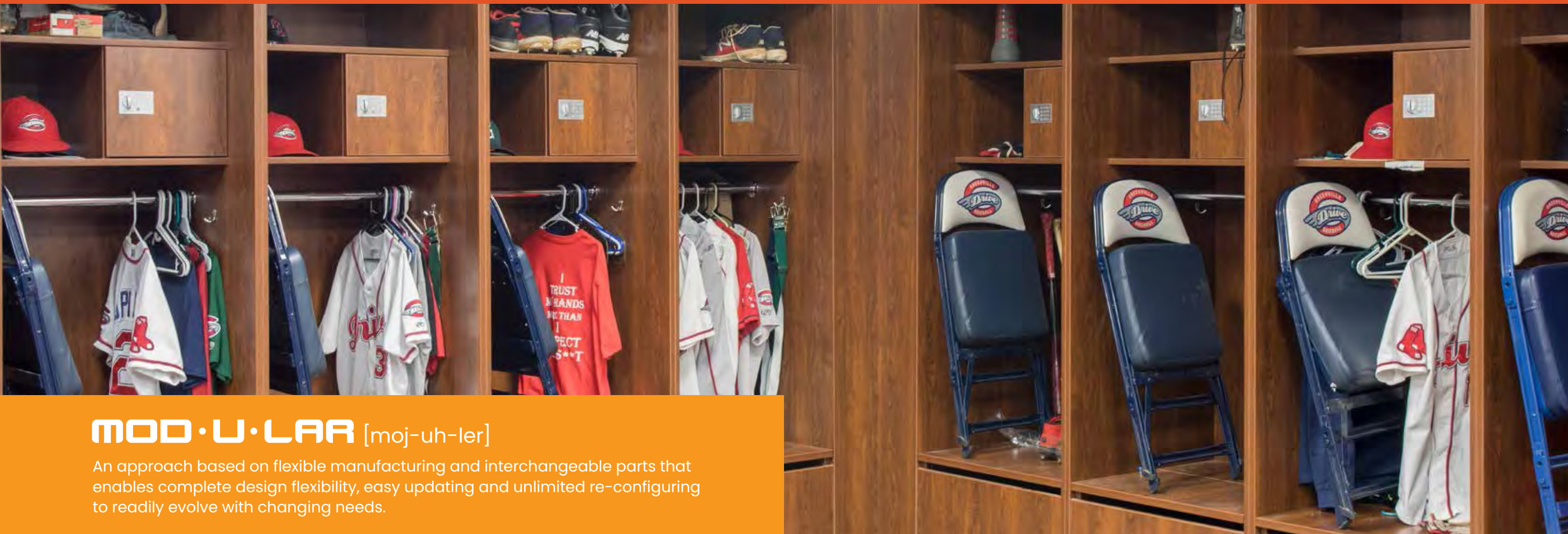


MacBick
LABS AND INTERIORS

Locker Solutions & Interiors

Modular / Agile Storage





MOD·U·LAR [moj-uh-ler]

An approach based on flexible manufacturing and interchangeable parts that enables complete design flexibility, easy updating and unlimited re-configuring to readily evolve with changing needs.

THE MODULAR MILLWORK DIFFERENCE IS USER-DRIVEN DESIGN.

Our process starts with a single question: “What do you need?” Whether it’s touring your facility, looking at blueprints or brainstorming with your team – we make sure we understand your vision and requirements so we can create a solution tailored to fit your specific needs.

Your company’s operation, physical space, interiors and staff dynamics are unique to you. Whether you’re a championship sports organization, agile office, high-tech research institute, medical clinic or elite consulting group – your dynamic storage solution reflect and support your unique vision and needs.



COVERING ALL THE BASES FOR THE GREENVILLE DRIVE.

When the 2017 SAL Champion Greenville Drive baseball team approached Modular Millwork to help revamp their locker rooms, they came with a long list of objectives for their new locker solution. Our modular system and design approach allowed us to incorporate their unique requirements into a solution tailored to the team’s every need (and then some).

We created and installed a durable, aesthetic locker system to support the high-impact demands of the championship sports team and deliver flexible, secure storage for every player. From the USB charging ports placed inside passcode secure compartments to durable, stylish hardware that will withstand years of constant use – Modular Millwork hit a home run with the Drive’s modular locker solution.

WE MAKE IT EASY FOR YOU TO BE CREATIVE.

LOCKERS MADE FOR TODAY'S AGILE WORLD.

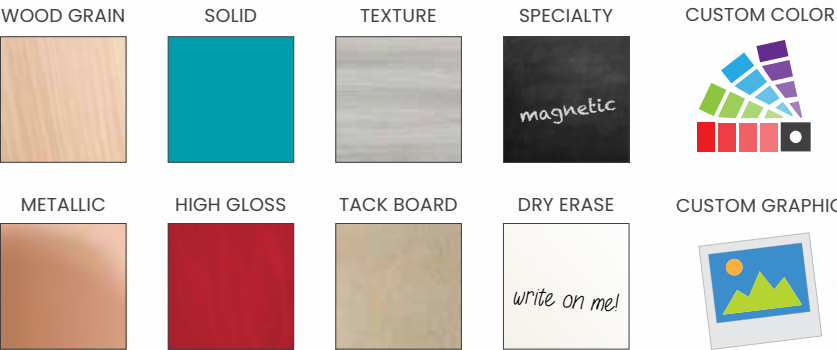
Today's workplaces are no longer static. Needs, staff assignments, locations and physical space constantly change as business evolves. Modular Millwork locker solutions are designed to easily change and adjust as your needs change.

STRUCTURAL INTEGRITY & STABILITY

Full 3/4" thickness solid backs give added stability and enable secure locker anchoring.

DESIGNER FINISHES

Premium finishes and construction compliment your design objectives and support your particular aesthetic, workflow and employee storage needs.



LIFETIME WARRANTED BLUM® HINGES

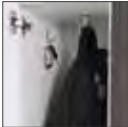
6-way adjustable, self-closing/non-drift hinges ensure perfect alignment of reveals every time – no matter how often you restack your space.

EASY CONNECTION + GANGING

Pre-machine to accept low-profile, flush mount fasteners for a quick and safe installation and easy relocation.

FLEXIBLE INTERIORS

Modular accessory options to meet your specific needs.



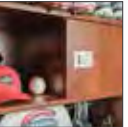
HOOKS



RODS



SHELVES



STORAGE BAYS



CHARGE PORTS

DUAL-SIDED LAMINATES

Our laminates are warranted for life against delamination and let you place and relocate locker modules with no concern for exposed unfinished surfaces.

HIGH-IMPACT-RESISTANT EDGES

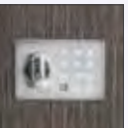
3mm thickness edges ensure a durable, lasting locker that will endure the abuse of heavy use and multiple relocations and still look new year after year.

LOCKING OPTIONS

A wide selection of locks and closure options to meet your precise needs for security, access convenience and aesthetics.



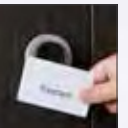
KEYPAD



DIGITAL



PADLOCK



RFID



KEY

HEAVY-DUTY LEVELERS

Easy access concealed base levelers make it quick and easy to relocate, level and restack lockers on demand.



DID YOU KNOW?

Modular Millwork is warranted for life against delamination or any defect in materials or workmanship.



DESIGN MAKES THE DIFFERENCE.

We know you want your design to go beyond functional, convenient storage. It should make a statement.

Plus, we understand the design of your space can and should communicate why you exist and what you value as an organization. You shouldn't have to sacrifice design for functionality.

At Modular Millwork, our goal is to make it possible for you to express your mission by letting your imagination be the only limit to your design.

K-12/University

- ➔ Art Room
- ➔ Breakroom
- ➔ Band Room Storage



DID YOU KNOW?

Modular Millwork's graphic capabilities let you leverage functional space to accentuate your design and create workspace ambiance.



THERE IS NOTHING RUN-OF-THE-MILL WITH MODULAR MILLWORK LOCKER SOLUTIONS .

Imagine the environment you want and the storage you need. Now, let's build it.

Our modular design flexibility and designer finishes let you have the specific functional layout you need for efficiency and the look you want to complement your professional workspace - with no customs upcharges.

DESIGNER LAMINATES

WITH HIGH-IMPACT
EDGES FOR STYLISH
DURABILITY



PRECISE CNC
MACHINING FOR
EASY INSTALL +
RESTACKING



LIFETIME WARRANTED BLUM HINGES

FOR SUSTAINABLE
AESTHETICS



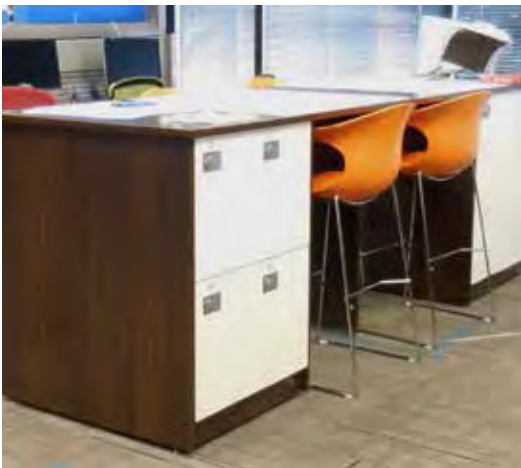
APPLICATIONS

- Employee Lockers
- Property Lockers
- Day Lockers
- Parcel Lockers
- Asset Storage Lockers
- Uniform/Garment Lockers
- Instrument Lockers
- Delivery Dry Clean Lockers



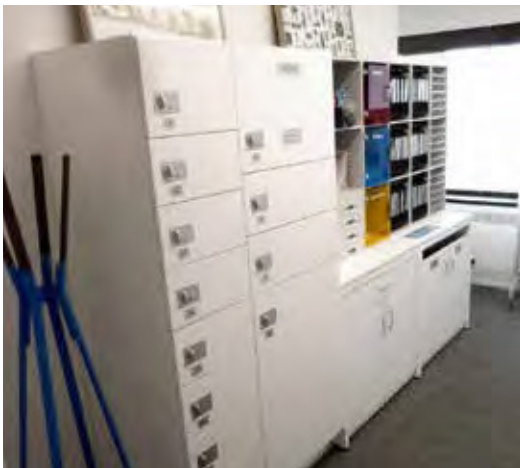
WHY MODULAR?

- Purchase once and relocate, restack and reuse as needed to evolve with your agile workforce.
- Provides secure, convenient and flexible storage for personal and business assets.



DID YOU KNOW?

We are an active USBGC member committed to sustainability.



RECONFIGURE
YOUR LOCKERS IN A
MATTER OF HOURS



AGILE SPACE CAN HAVE PERSONALITY, TOO.

Whether you're looking for a functional whiteboard finish or designer laminate, you need not sacrifice style for functionality. With Modular Millwork, you can get both.



EXPERT DESIGN
ASSISTANCE AND
INSTALLATION



FORTUNE 100 AGILE OFFICE utilizes MultiSort® kiosks allowing the co-location of parcels lockers, high density mailboxes and essential office supplies for secure, convenient retrieval.



HIGH-TECH LOGISTICS centers across campus condense floorspace by 80% and enable a hyper-mobile technology workforce to pick up vital daily mail, parcels and supplies at their convenience 24/7.



UNIVERSITY MAIL / PARCEL CENTER eliminates lines at service centers and enables students to directly retrieve packages from secure parcel lockers.

MultiSort®
MAIL & PARCELS SOLUTIONS

THE FUTURE OF MAIL + PARCELS LOGISTICS.

Today's technology driven world has become increasingly mobile to keep up with the rapidly evolving speed of business and life. Plus, ecommerce paired with modern logistic capabilities enables overnight delivery of needed assets and mail with just the click of a button.

MultiSort® HD Mail & Parcels Solutions let you conquer the challenge of distribution logistics by efficiently delivering mail and assets with security and convenience across your global network ... with chain-of-custody tracking at your fingertips.

Simply scan and deliver the asset into a designated or randomly selected parcel locker or HD Mailbox. Your recipient automatically receives a text or email notification with the locker location and a randomly generated pin code to retrieve the asset at their convenience, 24/7.

Modular Millwork will design, manufacture and install your MultiSort HD Mail & Parcels Solution to fit your space, security level, asset sizes and volume.

Let us transform your distribution headaches into an efficient reality that compliments your design vision and meets your delivery challenges.



DID YOU KNOW?

A MultiSort Mail and Parcels Solution typically reduces asset retrieval times from a few days to under 4 hours.



LOCKER SOLUTIONS CRAFTED TO LAST.

Modular Millwork lockers are made in the USA with premium materials, precisely engineered using advanced CNC technology and constructed by highly-skilled craftsmen. This insures a stylish and durable solution carefully built around your specific needs with modular flexibility to change and adapt as your needs evolve.



HERE FOR YOU EVERY STEP OF THE WAY.

Our goal is to understand your specific storage challenges and needs ... and work closely with you throughout the design process to create a locker solution that compliments your space and vision and improves your workspace.



MADE IN THE
USA

©2018 Modular Millwork® All rights reserved.



MacBick
LABS AND INTERIORS