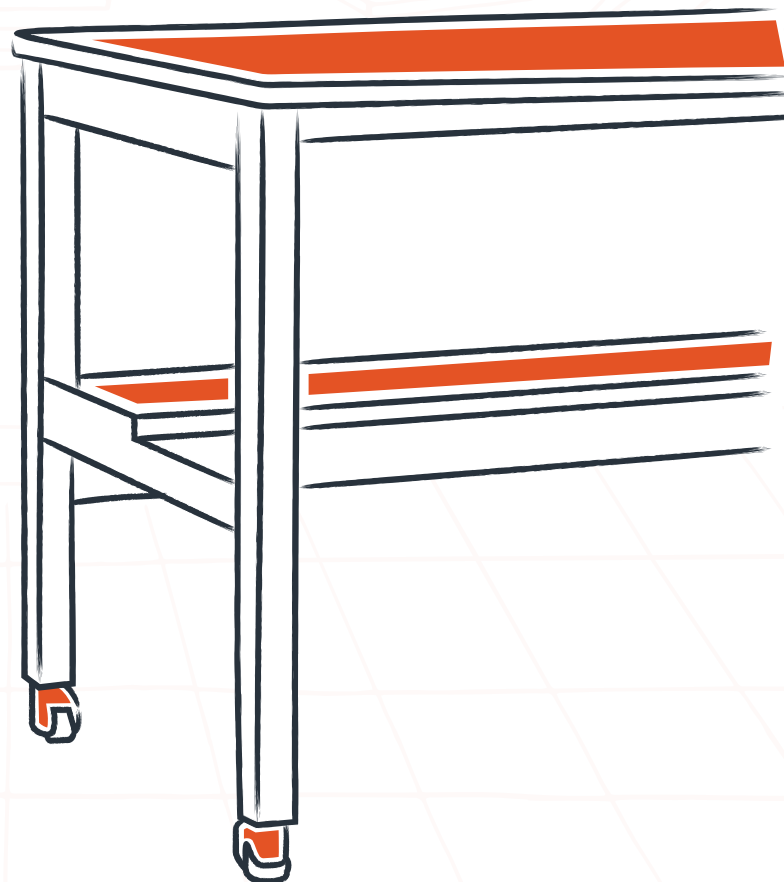
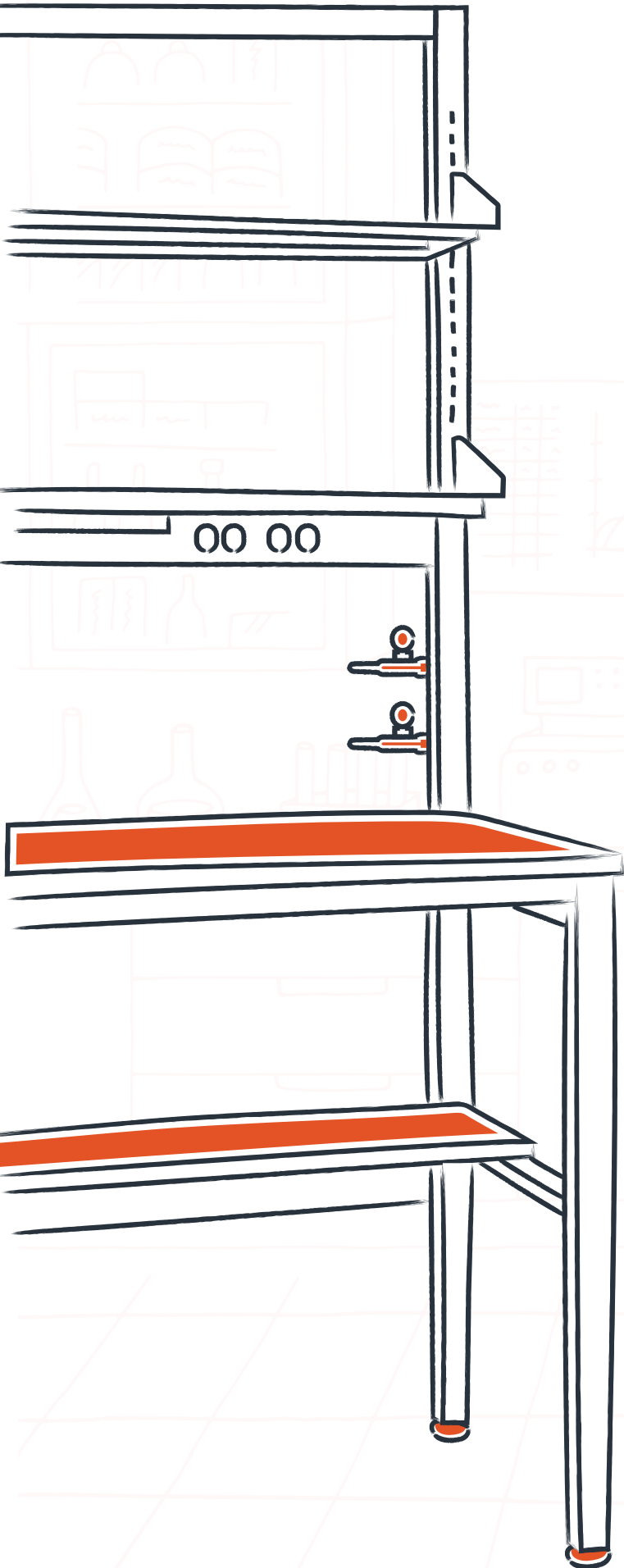


MacBick

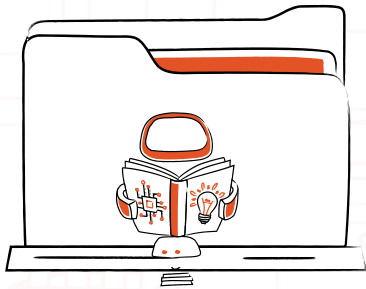
LABS AND INTERIORS



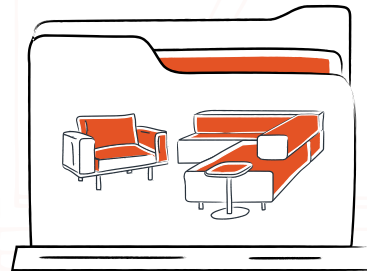
Your Partner In Workspace Transformations

MacBick Labs and Interiors excels in interior transformations and FF&E solutions, specializing in crafting innovative and functional spaces for labs, offices, and workspaces. Our commitment lies in creating inspiring environments that reflect your unique identity and enhance productivity.

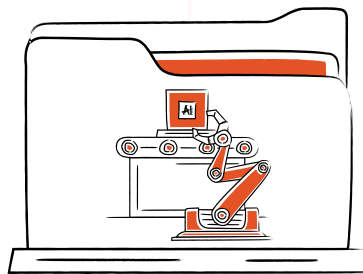
OUR SERVICES



DESIGN



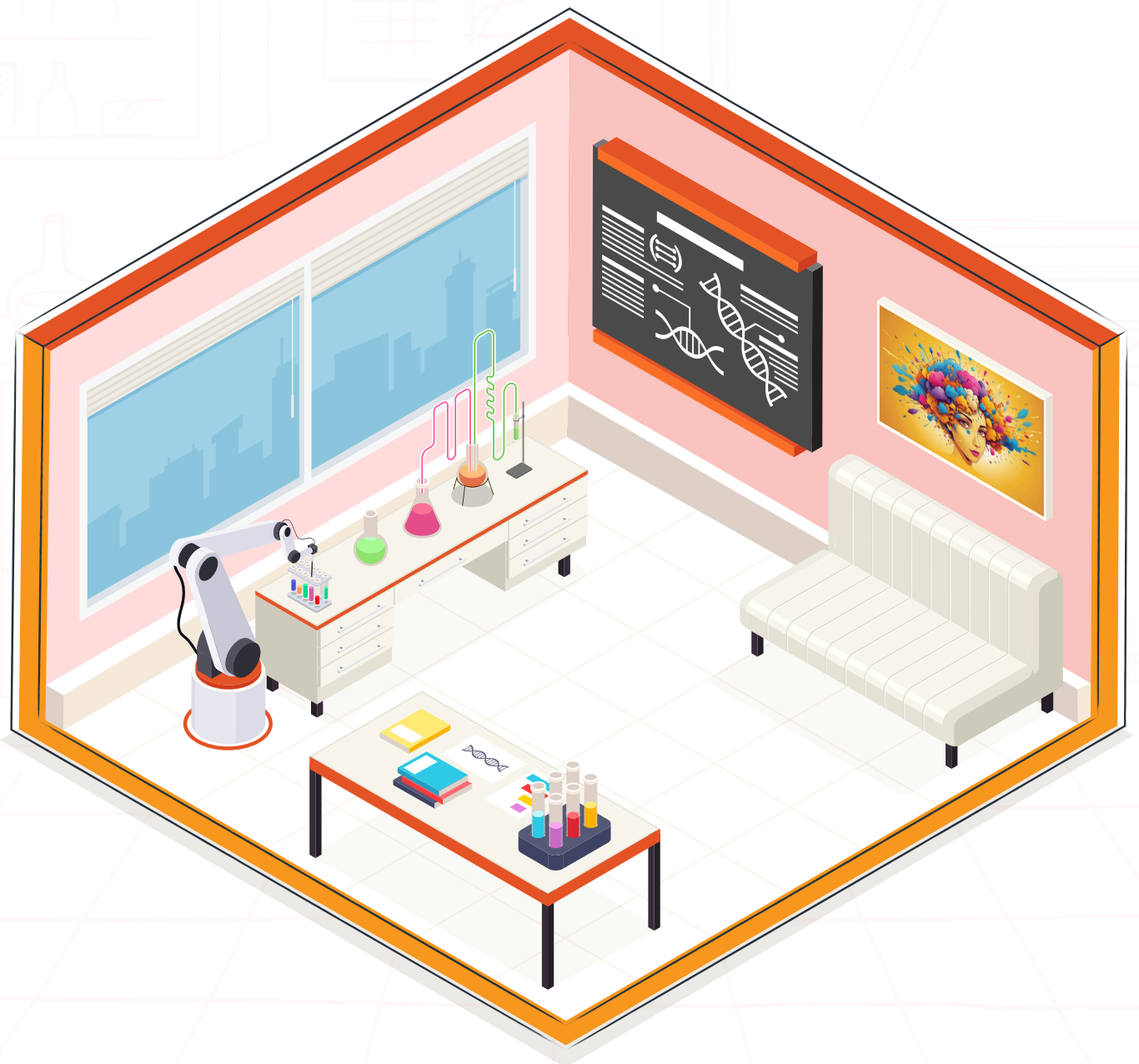
FURNITURE SOLUTIONS



INTERIOR TRANSFORMATION

DESIGN

Our team of experienced designers brings a passion for innovation and a deep understanding of laboratory and office environments to every project. They collaborate closely with you to translate your vision into a tangible reality.



FURNITURE SOLUTIONS

We source and manufacture high-quality furniture that meets the rigorous demands of laboratory and office settings. Our products are designed to enhance ergonomics, safety, and aesthetics.



INTERIOR TRANSFORMATION

We specialize in non-mechanical interior transformations, bringing your vision to life with a team of passionate professionals and an unwavering commitment to quality.

Space Planning: Let's unlock the true potential of your space. Our experts wield the magic of spatial reimagination, optimizing flow, function, and aesthetics to create a layout that sings.

FF&E Finesse: Furniture, fixtures, and equipment – the soul of your space. We'll curate a collection that reflects your unique style, from statement pieces to everyday essentials, all seamlessly woven into a cohesive symphony of design.

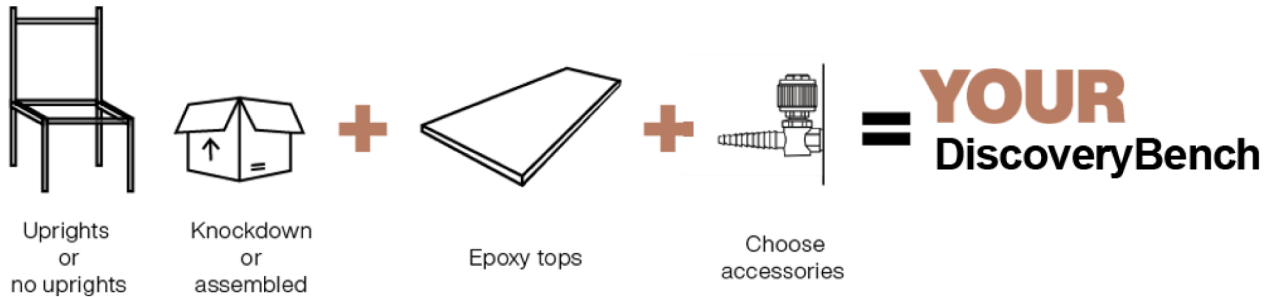
Material Marvels: From the plush caress of velvet to the sleek gleam of metallic accents, we source and incorporate materials that tantalize the senses and elevate your experience.

Lighting Luminance: Bathe your space in the perfect glow. We'll orchestrate a symphony of light and shadow, creating a functional and evocative atmosphere.

Finishing Flourishes: The final brushstrokes of your masterpiece. We'll handle all the finishing touches, from millwork and window treatments to artwork and accessories, ensuring every detail whispers your story.



- Offers the ideal starting point for a wide range of laboratory, cleanroom, and quality control activities
- Delivers a cost effective option for creating a functional workspace
- DiscoveryBench is a value-priced 4-leg height-adjustable work bench



CONFIGURE YOUR BENCH

Choose your bench, and whether you would like it to arrive knockdown or fully assembled. Then choose your accessories.

Features

- Shelving adjustable in 1" increments
- Will allow for 36" mobile storage units
- Allows for up to four service fixtures
- Data ports standard on uprights
- SEFA 10, Category 3 - 1,000 pound capacity
- Top horizontal support channel for fixture hose to rest in
- Bolt together construction
- Ships knock down or assembled
- Worktop height adjustable on 1" increments



Simplicity at its finest, DiscoveryBench 4-leg laboratory bench comes in several sizes with choice of glides or leveling casters.



Shown above is an assembled table with top.

Table = DB363060-CA
ResinTop = DB36R013060 BK

C = Leveling Caster

G = Glide



Minimum Height

Maximum Height

27" with caster
25" with glide

40" with caster
38" with glide

Available in our standard metal paint colors:

Part Number Depth Length

DB 3 6 2 4 3 6 XX	24	36
DB 3 6 2 4 4 2 XX	24	42
DB 3 6 2 4 4 8 XX	24	48
DB 3 6 2 4 5 4 XX	24	54
DB 3 6 2 4 6 0 XX	24	60
DB 3 6 2 4 6 6 XX	24	66
DB 3 6 2 4 7 2 XX	24	72
DB 3 6 3 0 3 6 XX	30	36
DB 3 6 3 0 4 2 XX	30	42
DB 3 6 3 0 4 8 XX	30	48
DB 3 6 3 0 5 4 XX	30	54
DB 3 6 3 0 6 0 XX	30	60
DB 3 6 3 0 6 6 XX	30	66
DB 3 6 3 0 7 2 XX	30	72
DB 3 6 3 6 3 6 XX	36	36
DB 3 6 3 6 4 2 XX	36	42
DB 3 6 3 6 4 8 XX	36	48
DB 3 6 3 6 5 4 XX	36	54
DB 3 6 3 6 6 0 XX	36	60
DB 3 6 3 6 6 6 XX	36	66
DB 3 6 3 6 7 2 XX	36	72

12 Welcome To The Dark Side	463 Wet Seal	242 Ashes to Ashes	85 Polar Ice Cap
94 Starry Night	20 Gel Couture	61 Busy Beeline	78 Funny Bunny
103 Love Me Some Blue	90 Frosted Almond	102 Midnight Caller	104 Fight Summer
87 Blue Pearl	62 Shadow in the Night	97 Blazing Orange	99 Howl At The Moon

DB36 **Depth** **Length** **C/G** **A/K**

—

C = CASTER
G = GLIDE
A = ASSEMBLED
K = KNOCKDOWN



MacBick 84

LABS AND INTERIORS

MacBick 84 expands above the worksurface with uprights. Allowing additional accessories and shelves to be mounted above the worksurface. Fixtures and data can also be added to each upright.



Shown above is an assembled table with top.

Table = DB843060-GA
Resin Top = DB84R013060-BK

C = Leveling Caster

G = Glide



Minimum Height

Maximum Height

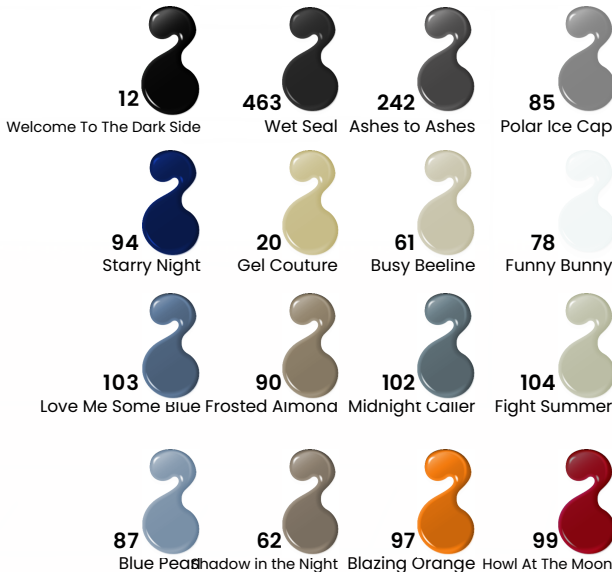
at Worksurface
27" with caster
25" with glide

at Worksurface
40" with caster
38" with glide

at top of Uprights
72.725" with caster
74.725" with glide

at top of Uprights
87.725" with caster
85.725" with glide

Available in our standard metal paint colors.



Part Number Depth Length

DB 843036 XX	30	36
DB 843042 XX	30	42
DB 843048 XX	30	48
DB 843054 XX	30	54
DB 843060 XX	30	60
DB 843066 XX	30	66
DB 843072 XX	30	72
DB 843636 XX	36	36
DB 843642 XX	36	42
DB 843648 XX	36	48
DB 843654 XX	36	54
DB 843660 XX	36	60
DB 843666 XX	36	66
DB 843672 XX	36	72

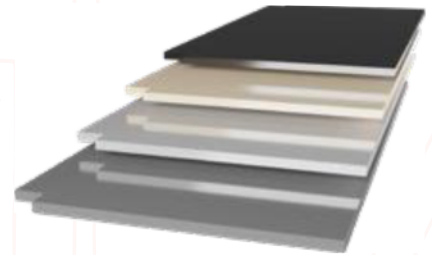
DB84 Depth Length — C/G A/K

□ □ □ □ — □ □

C = CASTER
G = GLIDE
A = ASSEMBLED
K = KNOCKDOWN

Kemresin® Epoxy Resin

Kemresin® is perfectly suited for use in the lab setting. With ultra-smooth non-porous surface appearance, composed of 1 inch thick molded epoxy resin, these tops come in four different colors. Colors include black, grey, putty and slate. With resistance to many acids, alkalis and solvents, this work top is also resistant to both heat and physical use. These Kemresin® tops can be used wherever the highest physical and chemical resistance properties are required.



Grey = GR



Slate = SL



Putty = PT



Black = BK

Part Number	Depth	Length	Part Number	Depth	Length
DB 36R012436	24	36	DB 84R013036	30	36
DB 36R012442	24	42	DB 84R013042	30	42
DB 36R012448	24	48	DB 84R013048	30	48
DB 36R012454	24	54	DB 84R013054	30	54
DB 36R012460	24	60	DB 84R013060	30	60
DB 36R012466	24	66	DB 84R013066	30	66
DB 36R013072	30	72	DB 84R013072	30	72
DB 36R013036	30	36	DB 84R013636	36	36
DB 36R013042	30	42	DB 84R013642	36	42
DB 36R013048	30	48	DB 84R013648	36	48
DB 36R013054	30	54	DB 8401R3654	36	54
DB 36R013060	30	60	DB 84R013660	36	60
DB 36R013066	30	66	DB 84R013666	36	66
DB 36R013072	30	72	DB 84R013672	36	72
DB 36R013636	36	36			
DB 36R013642	36	42			
DB 36R013648	36	48			
DB 36R013654	36	54			
DB 36R013660	36	60			
DB 36R013666	36	66			
DB 36R013672	36	72			

DB36R
Depth
Length
Color

0
1

-

ACCESSORIES

NOTE: ACCESSORIES ARE ORDERED AND SHIPPED SEPARATELY

UPPER SHELF

Part Number	Depth	Length
DB US1236	12	36
DB US1242	12	42
DB US1248	12	48
DB US1254	12	54
DB US1260	12	60
DB US1266	12	66
DB US1272	12	72
DB US1536	15	36
DB US1542	15	42
DB US1548	15	48
DB US1554	15	54
DB US1560	15	60
DB US1566	15	66
DB US1572	15	72



This shelf can be installed to meet several heights via varied slots in the uprights of this bench.

LOWER SHELF

Part Number	Depth	Length
DBLS0936	9	36
DBLS0942	9	42
DBLS0948	9	48
DBLS0954	9	54
DBLS0960	9	60
DBLS0966	9	66
DBLS0972	9	72
DBLS1236	12	36
DBLS1242	12	42
DBLS1248	12	48
DBLS1254	12	54
DBLS1260	12	60
DBLS1266	12	66
DBLS1272	15	72
DBLS1536	15	36
DBLS1542	15	42
DBLS1548	15	48
DBLS1554	15	54
DBLS1560	15	60
DBLS1566	15	66
DBLS1572	15	72



This lower shelf is installed across the bench's lower support.

CABLE MANAGEMENT

Part Number	Length
DB CM36	36
DB CM42	42
DB CM48	48
DB CM54	54
DB CM60	60
DB CM66	66
DB CM72	72



Cable management organizes power and data cables for an organized lab.

MONITOR ARM



LCDARMDB

This monitor arm rotates 360 degrees at two points. With an adjustable head with universal monitor mount, this arm easily clamps onto any Discovery Bench.

CPU HOLDER



CPUHOLDER

The CPU holder attaches via a bracket mount and swivels side to side. The heavy duty holder is adjusted 12" to 20" high and 3.5" to 9" depth.

FIXTURES

Choose up to two fixtures per side. Fixtures can be installed on the assembled or knockdown version, as well as ordered separately. The AIR/VAC/NIT service fixtures include PVC hose at desired length. GAS service fixtures include stainless steel hoses at desired length. Tech sheet required for installed fixtures. Fixture and hose come preassembled.

Hose Type	Part Number	Length
AIR/VAC/NIT	DBFXPV046-IN	46
AIR/VAC/NIT	DBFXPV096-IN	96
AIR/VAC/NIT	DBFXPV0168-IN	168
GAS	DBFXSP046-IN	46
GAS	DBFXSP096-IN	96
GAS	DBFXSP0168-IN	168

-IN only if installed



ACCESSORIES

NOTE: ACCESSORIES ARE ORDERED AND SHIPPED SEPARATELY

HANGING RAIL FOR SUSPENDED CABINET

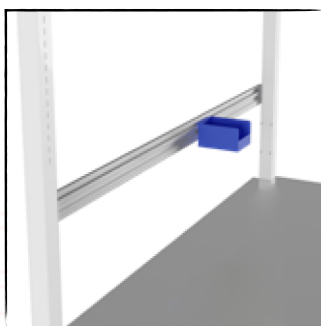
Part Number	Length
DB HR36	36
DB HR42	42
DB HR48	48
DB HR54	54
DB HR60	60
DB HR66	66
DB HR72	72



This hanging rail allows for the install of suspended cabinets.

BIN RAIL

Part Number	Length
DB BR36	36
DB BR42	42
DB BR48	48
DB BR54	54
DB BR60	60
DB BR66	66
DB BR72	72



This bin rail allows for easy installation of bins via a slotted rail. Bins can easily be moved and reorganized.

Note: Bin not included.

POWER BAR (20 AMP)

Available in Single or Dual circuit

Part Number	Length	Single or Dual Circuit (S/D)
DB PB2036S	36	S
DB PB2042S	42	S
DB PB2048S	48	S
DB PB2054S	54	S
DB PB2060S	60	S
DB PB2066S	66	S
DB PB2072S	72	S
DB PB2036D	36	D
DB PB2042D	42	D
DB PB2048D	48	D
DB PB2054D	54	D
DB PB2060D	60	D
DB PB2066D	66	D
DB PB2072D	72	D



Single Circuit (S)



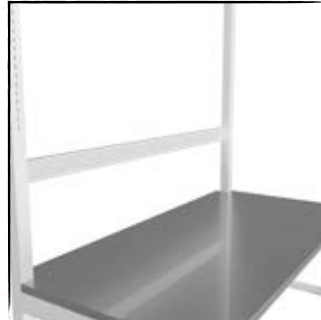
Dual Circuit (D)

Power bars available in dual or single circuit and can be located on the uprights. Dual circuit has two cords and two power switches. The Single circuit has one cord and one power switch. Both come with twist lock plug.

ACCESSORIES

POWER STRIP MOUNTING RAIL

Part Number	Length
DB PSRL36	36
DB PSRL42	42
DB PSRL48	48
DB PSRL54	54
DB PSRL60	60
DB PSRL66	66
DB PSRL72	72



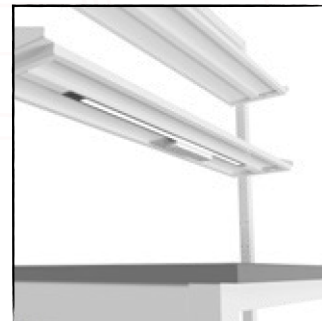
Power strip mounting rail allows for user supplied and installed power strip.

LED TASK LIGHTING

Part Number	Length
DB ML20	20
DB ML40	40

LED Task Lighting consists of a thin-profile, white, LED strip, 9.5 mm high by 33mm deep with a touch dimmer switch. It is UL listed and furnished with a 120 VAC to 24 VDC power supply with ten foot power cord. The light includes a magnetic mounting strip for mounting to steel shelving.

Part Number	Length	Fits under
X-030002-00	500mm - 195/8	29" - 40" Shelves
X-030003-00	1000mm - 393/8	46" - 47" Shelves



GLIDES AND CASTERS

Glides and casters come in sets of four.

Part Number
DBCAS
DBGLIDE

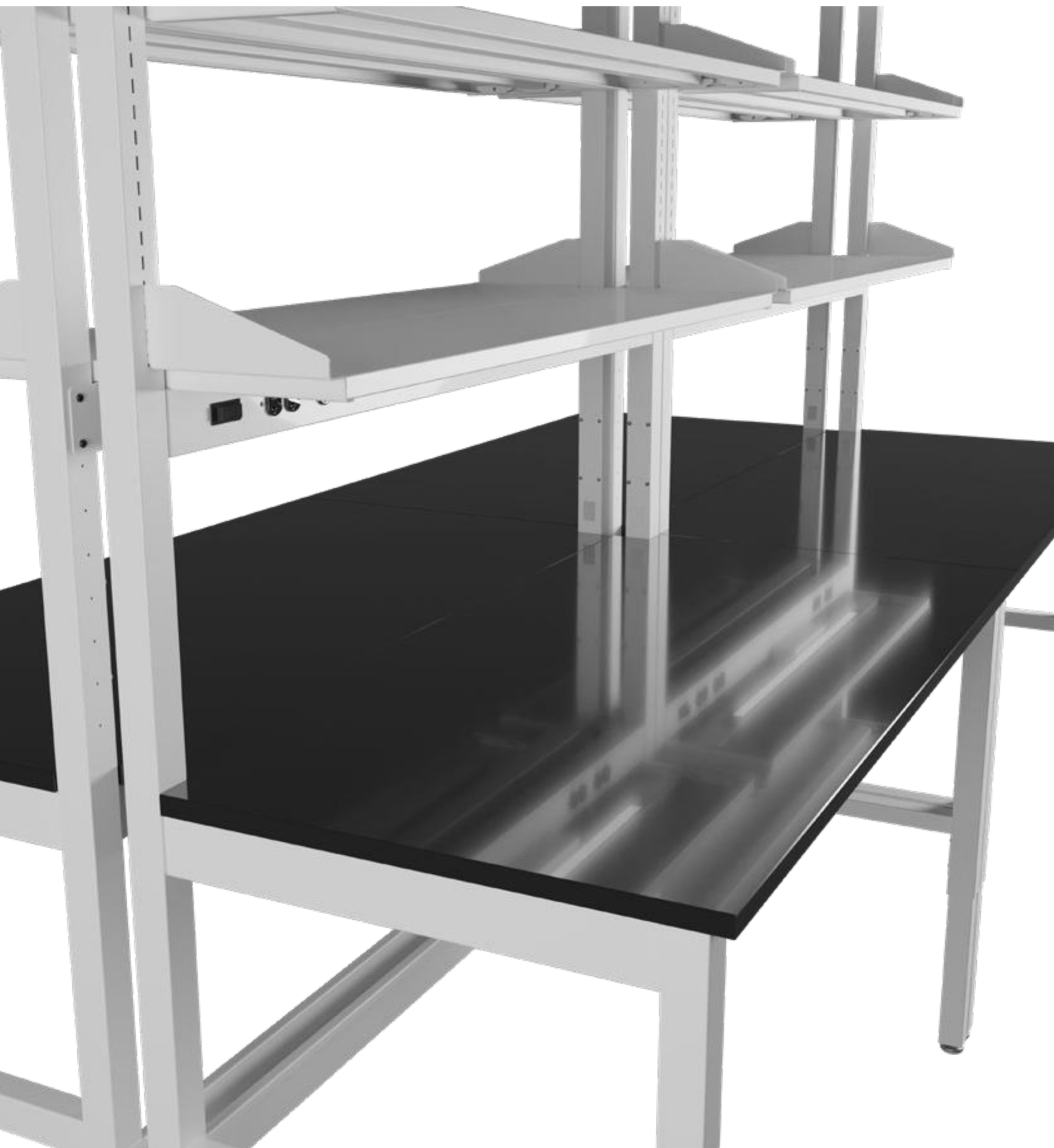
G = Glide



C = Leveling Caster



FLUSH WORK SURFACES



STORAGE CABINETS

Enough clearance for our 36" standing height, mobile, cabinets and accessory rail for hanging suspended cabinets. These cabinets are available in many different finishes as found in MacBick's Catalogs.





MacBick
LABS AND INTERIORS

Email Us: sales@macbick.com

Phone: (855) 460 7817

Website: www.macbick.com